

POLLUTION INCIDENT RESPONSE MANAGEMENT PLAN

Jeanella South Poultry Production Farm

Prepared for:

ProTen Holdings Pty Ltd
Mid Western Highway
Goolgowi NSW

SLR Ref: 630.11393
Version No: v4
September 2018



PREPARED BY

SLR Consulting Australia Pty Ltd
ABN 29 001 584 612
10 Kings Road
New Lambton NSW 2305 Australia
(PO Box 447 New Lambton NSW 2305 Australia)
T: +61 2 4037 3200 F: +61 2 4037 3201
E: newcastleau@slrconsulting.com www.slrconsulting.com

BASIS OF REPORT

This report has been prepared by SLR Consulting Australia Pty Ltd with all reasonable skill, care and diligence, and taking account of the timescale and resources allocated to it by agreement with ProTen Holdings Pty Ltd (the Client). Information reported herein is based on the interpretation of data collected, which has been accepted in good faith as being accurate and valid.

This report is for the exclusive use of the Client. No warranties or guarantees are expressed or should be inferred by any third parties. This report may not be relied upon by other parties without written consent from SLR

SLR disclaims any responsibility to the Client and others in respect of any matters outside the agreed scope of the work.

DOCUMENT CONTROL

Issue	Date	Description
1	November 2015	Final PIRMP for approval
2	October 2016	Update of PIRMP testing history
3	September 2017	Update of PIRMP testing history
4	September 2018	Update of PIRMP testing history and contact details

TESTING OF THE PIRMP HISTORY

Issue	Date	Description
1	September 2016	PIRMP handout to all farm staff detailing what classifies as a pollution incident and the correct procedure to follow in the event of a pollution incident at the Jeanella South Farm. PIRMP quiz completed by all farm staff with signoff by the Farm Manager.
2	September 2017	PIRMP handout to all farm staff detailing what classifies as a pollution incident and the correct procedure to follow in the event of a pollution incident at the Jeanella South Farm. PIRMP quiz completed by all farm staff with signoff by the Farm Manager.
3	September 2018	PIRMP handout to all farm staff detailing what classifies as a pollution incident and the correct procedure to follow in the event of a pollution incident at the Jeanella South Farm. PIRMP quiz completed by all farm staff with signoff by the Farm Manager.

CONTENTS

1	INTRODUCTION.....	6
1.1	Background and Scope	6
1.2	Availability of the PIRMP	6
1.3	Definition of a Pollution Incident	7
1.4	Regulatory Requirements	7
2	PREMISES DETAILS	10
2.1	Site Details	10
2.2	Description and Likelihood of Hazards	10
2.3	Pre-Emptive Action to be Taken	12
2.3.1	General Site Maintenance	12
2.3.2	Air Quality Management	12
2.3.3	Water Management	13
2.3.4	Fire Management	14
2.3.5	Waste Management	16
2.3.6	Poultry Disease and Biosecurity Management	16
2.3.7	Hazardous Material Management	18
2.4	Inventory of Pollutants	20
2.5	Safety Equipment	20
3	MANAGEMENT AND RESPONSIBILITIES.....	23
3.1	Contact Details	23
3.2	Relevant Regulatory Authorities	23
3.3	Communication with Neighbours and the Local Community	24
3.4	Minimising Harm to Persons on the Premises	24
3.5	Legal Duty to Notify	25
4	INCIDENT MANAGEMENT	26
4.1	Immediate Notification of a Pollution Incident	26
4.2	Actions During a Pollution Incident	26
4.3	Actions Following a Pollution Incident	28
5	TRAINING, TESTING AND COMMUNICATION.....	29
5.1	Staff Training	29
5.2	Testing of the PIRMP	29

CONTENTS

6	REFERENCES.....	30
----------	------------------------	-----------

DOCUMENT REFERENCES

TABLES

Table 1	Document Directory	8
Table 2	Potential Pollutants at the Development	20
Table 3	Inventory of Safety Equipment	20
Table 4	Primary Contacts for the Development	23
Table 5	Relevant Regulatory Authorities Contact Details	23

FIGURES

Figure 1	Location Plan	11
Figure 2	Water Bodies and Discharge Locations	15
Figure 3	Potential Pollutants	21
Figure 4	Fire Safety and First Aid Equipment	22

APPENDICES

Appendix A	Risk Assessment
Appendix B	Environmental Incident Report Form

ABBREVIATIONS

ARA	Appropriate Regulatory Authority
CLC	Community Liaison Committee
DP	Deposited Plan
EPA	Environment Protection Authority
EPL	Environment Protection Licence
PELA Act	<i>Protection of the Environment Legislation Amendment Act 2011</i>
PIRMP	Pollution Incident Response Management Plan
POEO Act	<i>Protection of the Environment Operations Act 1997</i>
POEO(G) Regulation	<i>Protection of the Environment Operations (General) Regulation 2009</i>
PPU	Poultry Production Unit
SDS	Safety Data Sheet

1 Introduction

1.1 Background and Scope

The *Protection of the Environment Legislation Amendment Act 2011* (PELA Act) received assent on the 16 November 2011 resulting in changes to the *Protection of the Environment Operations Act 1997* (POEO Act). The intent of the PELA Act is to improve the way pollution incidents are reported and managed. The specific requirements for a *Pollution Incident Response Management Plan* (PIRMP) are set out in Part 5.7A of the POEO Act and the *Protection of the Environment Operations (General) Regulation 2009* (POEO(G) Regulation). In summary, this legislation requires the following:

- All holders of an Environment Protection Licence (EPL) must prepare a PIRMP (section 153A, POEO Act);
- The PIRMP must include the information detailed in the POEO Act (section 153C) and the POEO(G) Regulation (clause 98C) and be in the form required by the POEO(G) Regulation (clause 98B);
- Licensees must keep the PIRMP at the premises to which the EPL relates, or, in the case of trackable waste transporters and mobile plant, where the relevant activity takes place (section 153D, POEO Act);
- Licensees must test the PIRMP at least every 12 months and after a pollution incident in accordance with the POEO(G) Regulation (clause 98E); and
- If a pollution incident occurs in the course of an activity so that material harm to the environment is caused or threatened within the meaning of Part 5.7 of the POEO Act, licensees must immediately implement the PIRMP (section 153F, POEO Act).

As the holder an EPL, the Jeanella South Poultry Production Farm (the 'Development'), which is owned and operated by ProTen Holdings Pty Ltd (ProTen), is required to comply with the POEO Act. As such, this document has been developed to satisfy the PIRMP requirements. This PIRMP covers the key actions to minimise the occurrence of a pollution incident and manage a pollution incident if one occurs (both during and after the incident). It also details the procedures for notification of pollution incidents resulting in or having the potential to cause material harm to the environment. **The notification of environmental incidents under this PIRMP is only required for those incidents causing or threatening to result in material environmental harm (a material harm incident) as defined in the POEO Act (see Section 1.3).**

While the PIRMP has been prepared for managing the impact to human health (employees and nearby neighbours) and the environment (onsite and offsite), it does not have procedures for the treatment of injured persons or the remediation of the environment following a pollution incident.

1.2 Availability of the PIRMP

In addressing the requirements of section 153D of the POEO Act and clauses 98B(1) and 98D of the POEO(G) Regulation, a copy of this PIRMP shall be kept in written form at the EPL premises (i.e. the Development Site) and shall be made readily available to all personnel responsible for implementing the PIRMP and to any authorised officer (as defined in the POEO Act) on request.

The PIRMP will be made publically available within 14 days of finalisation (taken to be authorisation of the PIRMP by the Site Manager) via the ProTen website www.proten.com.au.

1.3 Definition of a Pollution Incident

The POEO Act defines a pollution incident as:

“pollution incident means an incident or set of circumstances during or as a consequence of which there is or is likely to be a leak, spill or other escape or deposit of a substance, as a result of which pollution has occurred, is occurring or is likely to occur. It includes an incident or set of circumstances in which a substance has been placed or disposed of on premises, but it does not include an incident or set of circumstances involving only the emission of any noise”.

A licensee is required to notify the relevant regulatory authorities of a pollution incident if there is a risk of ‘material harm to the environment’, which is defined in section 147 of the POEO Act as:

- (a) *harm to the environment is material if:*
 - (i) *it involves actual or potential harm to the health or safety of human beings or to ecosystems that is not trivial, or*
 - (ii) *it results in actual or potential loss or property damage of an amount, or amounts in aggregate, exceeding \$10,000 (or such other amount as is prescribed by the regulations), and*
- (b) *loss includes the reasonable costs and expenses that would be incurred in taking all reasonable and practicable measures to prevent, mitigate or make good harm to the environment.*

Harm to the environment includes any direct or indirect alteration of the environment that has the effect of degrading the environment and, without limiting the generality of the above, includes any act or omission that results in pollution.

In the case of an environmental incident, prior to any other action, the site must contact emergency services by telephoning 000 if the incident presents an immediate threat to human health or property. Fire and Rescue NSW, the NSW Police and the NSW Ambulance Service are the first responders, as they are responsible for controlling and containing incidents.

If the incident does not pose any threat to human health or property, concurrently with contacting emergency services (000), all possible actions should be taken to control the pollution incident and minimise health, safety and environmental consequences. These actions must be employed to the maximum extent possible to provide for the safety of people at and within the vicinity of the site, and contain the pollution incident.

1.4 Regulatory Requirements

Table 1 outlines the structure of the PIRMP, as per the requirements of the POEO Act.

Table 1 Document Directory

Section 153C	Detail Required	Section in PIRMP
(a)	The procedures to be followed by the holder of the relevant EPL in notifying a pollution incident to: (i) The owners or occupiers of premises in the vicinity of the premises to which the EPL relates; (ii) The local authority for the area in which the premises to which the EPL relates; and (iii) Any persons or authorities required to be notified by Part 5.7 (of the POEO Act).	Sections 3.1, 3.2 and 3.3
(b)	A detailed description of the action to be taken immediately after a pollution incident, by the holder of the relevant EPL to reduce or control any pollution.	Section 4.3
(c)	The procedures to be followed for coordinating, with the authorities or persons that have been notified, any action taken in combating the pollution caused by the incident and, in particular, the persons through whom all communications are to be made.	Section 3.0
(d)	Any other matter required by the POEO(G) Regulation (as set out below): <i>98C(1)(a) A description of the hazards to human health or the environment associated with the activity to which the licence relates (the relevant activity),</i>	Sections 2.2 and 2.4, and Appendix A
	<i>98C(1)(b) The likelihood of any such hazards occurring, including details of any conditions or events that could, or would, increase that likelihood,</i>	Section 2.2 and Appendix A
	<i>98C(1)(c) Details of the pre-emptive action to be taken to minimise or prevent any risk of harm to human health or the environment arising out of the relevant activity,</i>	Section 2.3 and Appendix A
	<i>98C(1)(d) An inventory of potential pollutants on the premises or used in carrying out the relevant activity,</i>	Section 2.4
	<i>98C(1)(e) The maximum quantity of any pollutant that is likely to be stored or held at particular locations (including underground tanks) at or on the premises to which the licence relates,</i>	Section 2.4
	<i>98C(1)(f) A description of the safety equipment or other devices that are used to minimise the risks to human health or the environment and to contain or control a pollution incident,</i>	Section 2.5
	<i>98C(1)(g) The names, positions and 24-hour contact details of those key individuals who:</i> <i>(i) are responsible for activating the plan, and</i> <i>(ii) are authorised to notify relevant authorities under section 148 of the Act, and</i> <i>(iii) are responsible for managing the response to a pollution incident,</i>	Section 3.1
	<i>98C(1)(h) The contact details of each relevant authority referred to in section 148 of the Act,</i>	Section 3.2
	<i>98C(1)(i) Details of the mechanisms for providing early warnings and regular updates to the owners and occupiers of premises in the vicinity of the premises to which the licence relates or where the scheduled activity is carried on,</i>	Sections 3.3 and 4.3, and Appendix A
	<i>98C(1)(j) The arrangements for minimising the risk of harm to any persons who are on the premises or who are present where the scheduled activity is being carried on,</i>	Section 3.4

Section 153C	Detail Required	Section in PIRMP
	<i>98C(1)(k) A detailed map (or set of maps) showing the location of the premises to which the licence relates, the surrounding area that is likely to be affected by a pollution incident, the location of potential pollutants on the premises and the location of any stormwater drains on the premises,</i>	Figures 1, 2, 3 and 4
(d)	<i>98C(1)(l) A detailed description of how any identified risk of harm to human health will be reduced, including (as a minimum) by means of early warnings, updates and the action to be taken during or immediately after a pollution incident to reduce that risk,</i>	Section 4 and Appendix A
	<i>98C(1)(m) The nature and objectives of any staff training program in relation to the plan,</i>	Section 5.1
	<i>98C(1)(n) The dates on which the plan has been tested and the name of the person who carried out the test,</i>	Section 5.2 and after TOC ¹
	<i>98C(1)(o) The dates on which the plan is updated,</i>	After TOC ¹
	<i>98C(1)(p) The manner in which the plan is to be tested and maintained.</i>	Section 5.2

1 – Table of Contents

2 Premises Details

2.1 Site Details

ProTen received Development Consent DA 2016/009 on the 20 October 2015 from Carrathool Shire Council (Council) to develop the Jeanella South Poultry Production Farm (the “Development”) within a rural property approximately 6.5 kilometres southwest of Goolgowi and approximately 46 kilometres northwest of Griffith in south-western New South Wales (NSW).

As shown on **Figure 1**, the Development comprises one Poultry Production Unit (PPU) where broiler birds are grown for human consumption. The PPU comprises 16 tunnel-ventilated fully-enclosed climate-controlled poultry sheds, with associated support infrastructure and staff amenities. Each shed has the capacity to house 53,500 birds, equating to a site population of up to 856,000 birds.

The Development’s disturbance footprint (including access roads, servicing infrastructure and support infrastructure) is relatively small at approximately 25 hectares and the commercial activity associated with the poultry operation is largely confined to the PPU. It is intended to continue using the land outside of the disturbance footprint within the Development Site for continued agricultural production purposes under some form of lease or share farming arrangement.

Construction of the Development commenced in November 2015, with operations scheduled to commence in December 2015.

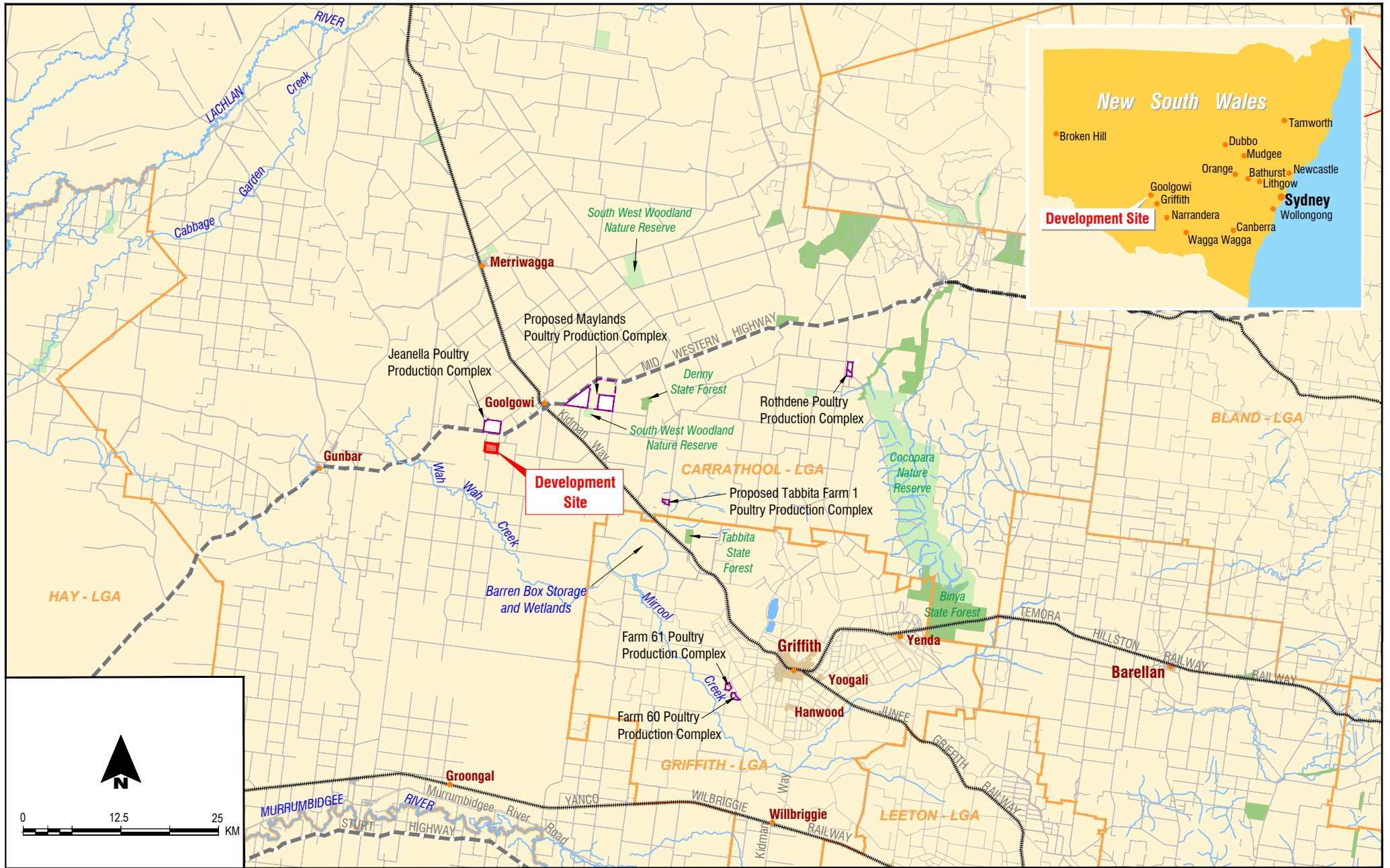
2.2 Description and Likelihood of Hazards

This section has been prepared to meet the requirements of Clauses 98C(1)(a), (b) and (c) of the POEO(G) Regulation.

The likelihood of environmental hazards occurring at the Development has been captured via a Broad Brush Risk Assessment (**Appendix A**). The purpose of the risk assessment was to identify the potential major hazards and/or risk(s) posed by the poultry production operation, the controls necessary to effectively mitigate and/or manage these risks and the key pollution response measures.

The potential major hazards that have been identified at the Development are:

- Gas leaks;
- Chemical Spill;
- Petrol or Diesel Spill; and
- Fire in or around the poultry sheds.



To be printed A4

2.3 Pre-Emptive Action to be Taken

2.3.1 General Site Maintenance

The PIRMP Risk Assessment (**Appendix A**) outlines potential pollution incident risks at the Development site. For each potential risk, there are a number of controls outlined. Regular and effective site maintenance is essential to minimise odour, dust, noise and pests. Emphasis is placed on keeping the interior of the poultry sheds and surrounding environs as clean as possible, with maintenance activities including:

- Regular inspection and maintenance of ventilation systems, feed lines and water lines to avoid blockages, spillages, leaks and uneven distribution;
- Regular examination and management of stocking densities and bird health within the poultry sheds;
- Appropriate waste management practices/systems;
- Correct storage of chemicals and potential pollutants;
- Daily inspection and removal of dead birds from within sheds;
- Daily inspection and maintenance of bedding materials to identify, remove and replace any areas with excessive moisture content (for example, under the water drinkers);
- Maintenance of landscape plantings;
- Implementation of pest control measures, primarily a preventative baiting system;
- Regular inspection and maintenance of water supply pumps and pipelines to identify and fix any blockages or leaks;
- Regular site slashing and mowing;
- Training and awareness; and
- Testing of the PIRMP as per **Section 5.2**.

While ProTen makes all attempts to prevent pollution incidents, in a situation where a pollution incident is imminent and may potentially cause impacts to human health or the environment, Site Management will contact the necessary stakeholders (employees, contractors, neighbours and relevant authorities) to provide as much early warning as possible.

2.3.2 Air Quality Management

Air quality issues are directly related to farm operation (in addition to meteorological conditions and surrounding land uses), with good management practices playing a significant role in reducing the potential for offensive emissions. Mitigation measures and management strategies employed include:

- Regular monitoring and maintenance of the tunnel ventilation systems and bird drinkers will be undertaken to avoid spillages, leaks and uneven distribution.
- Stocking densities and bird health within the poultry sheds will be regularly checked and, if necessary, appropriate corrective measures will be implemented.
- Daily monitoring and maintenance of the bedding material to identify, remove and replace any caked material beneath drinking lines and/or areas with excessive moisture content.

- Poultry litter will be promptly removed from the sheds and transported off-site in covered trucks at the end of each production cycle during the clean-out phase. Where possible, litter handling will be avoided during adverse climatic conditions, such as times of cold air drainage during early morning or towards nights and strong winds. The shed ventilation systems will not be used during litter removal.
- Dead birds will be collected from the sheds on a daily basis and stored in the on-site chiller prior to removal from site.
- During sanitisation of the poultry sheds, the amount of air released from the sheds while any sanitising scent is present will be minimised and, if possible, a low scent sanitiser will be utilised.
- The waste management systems described in Section 2.3.5 will be implemented to ensure that each waste stream generated by the Development is effectively managed and disposed of offsite.

2.3.3 Water Management

The potential for adverse impact to surface water and groundwater resources from the operation of intensive poultry production farms is very low, with the risk of impact considered far less than traditional agricultural activities. Given the controlled environment in which the Development operates, along with the environmental licensing conditions it is required to comply with, it poses a low risk to local water resources and no detectable impact is expected. The engineered surface water drainage and management strategy provides long-term structural controls and management to mitigate the impact of surface water runoff throughout the life of the operation.

There are no notable surface water bodies or tributaries within the bounds of the Development, nor within close proximity to the site. The nearest notable natural water source appears to be Wah Wah Creek, close to 5.5 kilometres to the south-west of the site. A number of formed irrigation channels, which are part of the Murrumbidgee Irrigation system, traverse the Development Site.

The Development does not contain any flood liable land and has significant horizontal and vertical separation between the site and any waterways.

The main operational water sources within the PPU sites are:

- Wash down water from within the sheds at the end of each nine week production cycle (approximately 5.7 times per year);
- Rainfall runoff from the shed roofs; and
- Rainfall runoff from the ground surfaces surrounding the poultry sheds and additional improvements.

An engineered surface water drainage and management strategy has been established to provide long-term structural controls and management to mitigate the impact of surface water runoff throughout the life of the operation. The strategy comprises of a series of dirty water dams to capture rainfall runoff from within the PPU environs and direct it to on-site retention dams. Based on the land topography/contours surrounding the PPUs there is minimal/negligible clean water catchment. On this basis no clean water deflection banks (or similar) are warranted. Each poultry shed is surrounded by a dwarf concrete bund wall to prevent rainwater and runoff entering the sheds and allow for the controlled discharge of wash down water from the sheds. The concrete bunds have strategically located seepage holes to convey excess wash down water from the sheds into grassed swales between each of the sheds. Rainfall runoff from the shed roofs and from some of the surrounding surfaces is also directed into the grassed swales.

The swales are designed to allow infiltration of the water into the topsoil for nutrient uptake by the grass, which is regularly slashed. During heavy rainfall events, excess water from the grassed swales will be conveyed via stormwater pipes under the PPU ring road into the eastern length of the catch drains installed around the perimeter of each PPU. The perimeter catch drains will ensure that all stormwater runoff from the PPU environs is contained within the controlled storm water management system. The perimeter catch drain conveys the water to an on-site water storage dam (sediment basin) within each of the PPU sites. This structure is designed to capture all water from the PPU including rainfall runoff volume of the design event, which is anticipated to be a 1 in 20 year event (20 year annual recurrence interval).

A wheel wash facility is located on the internal access road to the Development. All vehicles entering the site are required to pass through the wheel wash to remove dust particles from the wheels and chassis. The aim of the wheel wash is to minimise the mechanical transmission of disease pathogens from either entering or leaving the Development site. The wheel wash facility is a self-contained unit that helps to minimise the potential for run-off. Wastewater from the wheel wash drains into a turkey nest dam below each wheel wash facility.

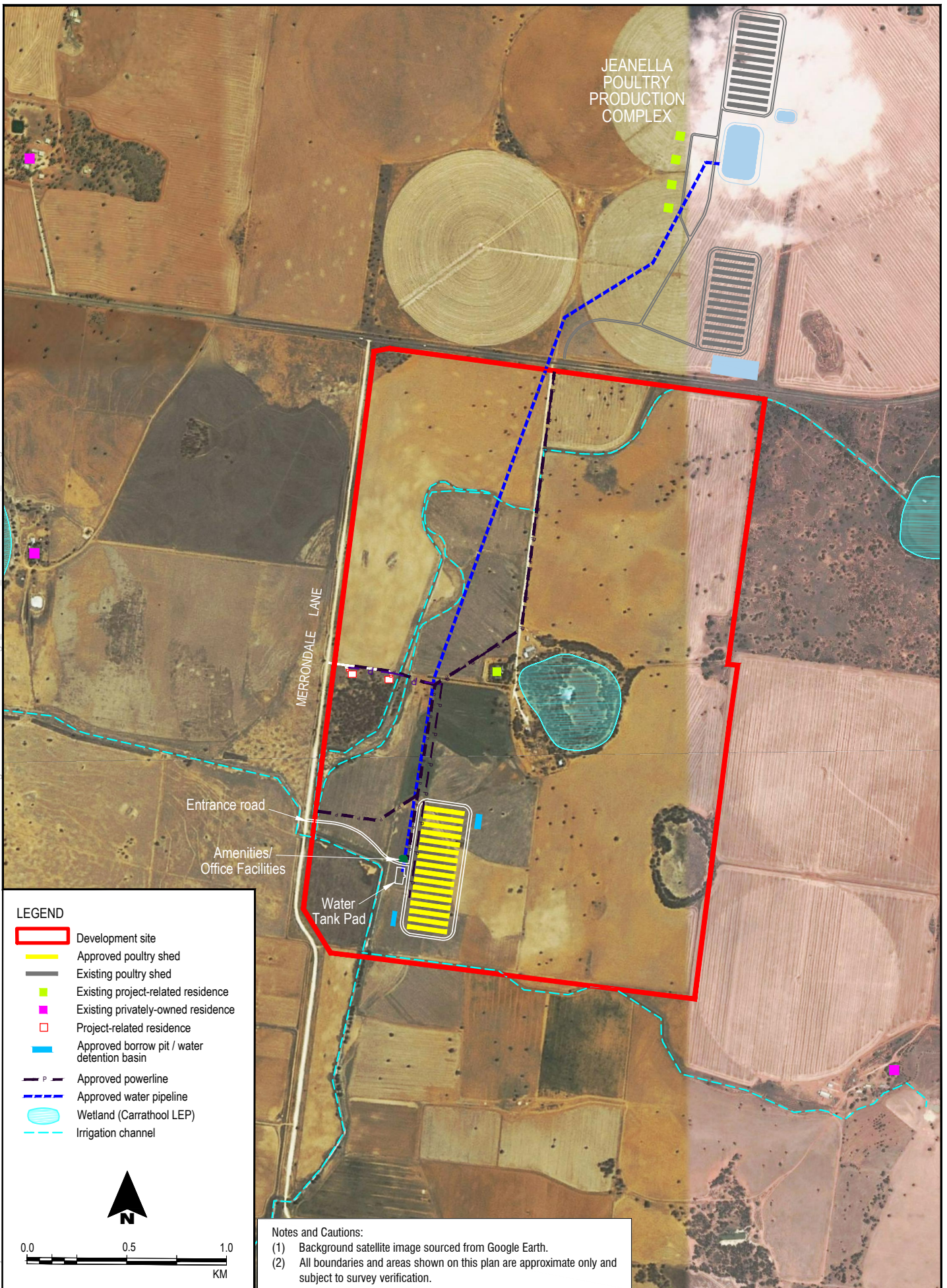
In terms of domestic wastewater management, the wastewater generated by on-site dwellings and staff amenities is treated and disposed of via on-site wastewater management systems installed and operated in accordance with the requirements of Council and the relevant standards/guidelines. A contractor is engaged to service these systems as required, which is typically quarterly. The treated effluent is disposed of via irrigation/evaporation areas and used for trickle irrigation onto gardens. Based on the relatively low volumes, quality of treated effluent and the low permeability of the underlying rock strata, the likely impact on surface water and/or groundwater is considered minimal.

Figure 2 shows the sites water bodies and discharge locations.

2.3.4 Fire Management

The risk of a fire at the Development is minimised via the following management practices:

- Smoke detection systems are installed within in office buildings and within the PPU;
- Fire extinguishing equipment is located in the office buildings and within each poultry shed;
- Regular site slashing and mowing;
- The grass within the shed environs is maintained short;
- Gas is contained onsite in permanent bulk tanks; and
- Fuel is stored in bunded tanks with an overflow container.



2.3.5 Waste Management

Stockpiling and/or disposal of waste materials, especially poultry litter, dead birds and chemical containers, can result in leaching of nutrients and pollution to surface waters and groundwater. However, appropriate systems are in place at the Development to ensure that each waste stream generated by the poultry operation is effectively managed and disposed of off-site. On-site stockpiling or disposal of waste materials is not permitted.

General Daily Waste

Day-to-day general waste is collected on a regular basis from the Development Site by a licensed contractor for recycling and/or disposal at a local waste facility/landfill. No waste material is disposed of on-site.

Poultry Litter

At the end of each production cycle a typical poultry shed will have around 200 cubic metres of poultry litter, comprising around 90 cubic metres of bedding material (soft wood shavings, rice hulls or chopped straw) and 110 cubic metres of manure accumulated over the eight weeks of bird occupation. The feed and water lines will be raised to the roof of the poultry sheds to allow the poultry litter to be removed by a contractor using a front-end loader or bobcat and loaded in to trucks for transport off site. The sheds will then be blown and swept to collect any remaining litter, before being washed (using high-pressure low-volume sprays), sanitised and disinfected. The management of the wash down water from the cleanout phase is discussed in **Section 2.3.3**.

When possible, the handling of poultry litter will be avoided during adverse climatic conditions (for example, strong winds). The shed ventilation systems will not be used during the removal of poultry litter.

Dead Birds

Dead birds are collected from the poultry sheds on a daily basis and stored in a chiller to be located near the main entrance to the Development Site. A rigid truck visits the site on a regular basis to collect the dead birds and transport them to Baiada's protein recovery plant (rendering plant), which is part of the poultry processing Farm near Hanwood on Kidman Way. Dead birds will not be allowed to stockpile within the Development Site for biosecurity reasons.

Chemical Containers

The only chemicals that will be used at the Development Site will be for sanitisation and disinfection of the poultry sheds during the cleanout phase at the end of each production cycle, pest and vermin control and weed control. Chemicals will be purchased from a local chemical supply company and/or delivered to the site by Baiada. Empty chemical containers will be returned to the chemical supply company and/or Baiada for recycling, reuse or appropriate disposal. Alternatively a licensed contractor will be engaged to provide a chemical container pickup service for recycling, reuse or appropriate disposal. Any non-returnable chemical containers can be collected and managed via the *drumMUSTER* program

2.3.6 Poultry Disease and Biosecurity Management

Biosecurity refers to those measures taken to prevent or control the introduction and spread of infectious agents to a flock. It aims to prevent the introduction of infectious diseases, and prevent the spread of disease from an infected area to an uninfected area. Biosecurity plays a vital role in the incidence of disease and is an integral part of any successful poultry production system.

The key biosecurity measures implemented at the Development include the following:

Farm Signage

Appropriate signage will be erected at the entrance to the Development Site to notify visitors of the biosecurity zone and direct them to contact ProTen prior to proceeding.

Farm Isolation

The greater the separation distance between poultry operations the less opportunity there is for disease spread. The Development is located over 2,000 metres to any other intensive poultry operations (existing and proposed), which is well in excess to that recommended in *Best Practice Management for Meat Chicken Production in NSW* (Department of Primary Industries 2012).

Disease pathogens can survive for some time on people and clothes and, as such, isolation in time is also important. Time isolation allows equipment to be disinfected and allows personnel to shower and change clothing.

Single Age Farm

Vaccinated stock can become infected and show no clinical signs of disease, yet can transfer the disease to younger and/or more susceptible birds. To reduce the risk for disease transfer and outbreak, whole flock units with minimum age difference are placed into each poultry shed. On this basis, the Development will operate on an 'all in – all out' placement and depopulation program.

Closed Flock

Birds on other sites may be exposed to different strains of organisms to which other flocks may not have developed immunity to. In addition, birds may have been exposed to a disease organism and not have developed clinical signs of the disease. Moving apparently healthy birds into a disease-free flock could mean introducing disease to a clean farm site. For these reasons, once a flock is placed, no new birds are introduced from any other source.

Other Measures

Various other biosecurity measures will be implemented on a routine basis in accordance with the *National Farm Biosecurity Manual for Chicken Growers* (Australian Chicken Meat Federation 2010). These include:

- The poultry sheds and equipment will be sanitised and disinfected at the end of each production cycle;
- Dead birds are removed from the poultry sheds on a daily basis and stored in an on-site chiller prior to removal off site;
- At the end of each production cycle, poultry litter will be promptly removed from the poultry sheds and transported off site;
- There will be no on-site stockpiling or disposal of waste materials;
- Poultry water supply will be filtered and chlorinated prior to be pumped in to the storage tanks;
- A vehicle wheel wash is installed at the entrance to the Development Site;
- A pest control program will be implemented;
- Staff members working in direct contact with livestock will not be permitted to keep other bird species or pigs at their place of residence; and

- Staff members and visitors will not be permitted to travel between poultry operations without changing clothes and foot wear.

Specific measures will be implemented in an attempt to limit wild birds and waterfowl from the poultry sheds and surrounding areas. These measures will include:

- The poultry sheds and feed silos are fully enclosed and well maintained to prevent the entry of wild birds;
- The grass within the shed environs will be regularly slashed and/or mown to discourage wild birds; and
- The surface water management system will ensure the area around the poultry sheds is adequately drained to prevent the accumulation and stagnation of water likely to attract waterfowl.

Pest Control

A variety of pest control measures are implemented to discourage pests and vermin from establishing residency within and around the PPU site.

2.3.7 Hazardous Material Management

Limited chemicals are used as part of the poultry production operation. The primary areas of use are:

- Sanitation of the poultry sheds during the cleaning phase at the end of each production cycle;
- Sanitation of water within the vehicle wheel wash facility;
- Pest and vermin control, when and where necessary;
- Disinfection of the water supply; and
- Weed control (when necessary).

As previously advised, a chemical supply company is engaged to provide a chemical delivery and pick up service direct to the Development. It is the usual practice for chemicals to be delivered to the site only a few days prior to the commencement of the cleaning phase in order to minimise on-site chemical storage. Appropriately sealed chemical storage containers are provided at the PPU site for the short-term storage of the limited volumes of chemicals delivered to the site. At each delivery of new chemical supplies, all empty chemical containers are retrieved by the chemical company for reuse, recycling or appropriate disposal.

Given the limited applications and current management practices, including appropriate staff training and incident management procedures, the potential for adverse impact from chemical use within the site is considered relatively low. The following mitigation measures and management practices are employed to minimise the potential for adverse impact from the use of chemicals within the development site:

Development Design

- The poultry sheds have fully sealed concrete floors ensuring no downward seepage of liquid.

Chemical Use, Storage and Disposal

- Staff members will be instructed in the proper use and handling of all chemicals used on site. If appropriate, this will include completion of training such as SMARTtrain or ChemCert (or similar).
- All chemical use will be undertaken in full compliance with the relevant statutory requirements, including the *Pesticides Act 1999*.

- Where appropriate, chemicals used will be approved by the Australian Pesticide and Veterinary Medicine Authority as safe and fit for that particular use.
- A chemical storage container/shed that is appropriately sealed and bunded, and with appropriate signage, will be installed for the limited volumes of chemicals to be stored on site.
- The diesel and petrol will be stored in bunded tanks with overflow containers. These overflow containers will be regularly inspected and, when required, removed by a licenced contractor to prevent overflow and replaced. Any excess water collected in the bunded areas will also be removed by the contractor.
- Copies of the Safety Data Sheet (SDS) for each chemical and fuel used on site will be kept within the chemical storage facility and in the site office.
- Empty chemical containers will be returned to the chemical supply company and/or Baiada for recycling, reuse or appropriate disposal. Alternatively a licensed contractor will be engaged to provide a chemical container pickup service for recycling, reuse or appropriate disposal. Any non-returnable chemical containers can be collected and managed via the drumMUSTER program.

Petrol, Diesel and LPG Use and Storage

There are six permanent bulk LPG tanks on site at the Development. The LPG tanks supply gas to shed heaters during brooding phase of the poultry production cycle.

There are two diesel tanks at the Development. Diesel-powered emergency standby generators are installed and provide electricity to the PPUs in the event of power loss from the electricity grid. The PPU also has a 2,000 litre petrol tank, which contains a maximum of 1,200 litres of petrol. To minimise risk of a petrol or diesel spills, fuel is stored in bunded tanks with overflow containers. These overflow containers are inspected regularly and, when required, are removed by a licenced contractor to prevent overspill and are replaced with an appropriate empty container. Any excess water collected in bunded areas is also removed by a licenced contractor.

SDS are maintained on-site for diesel, petrol and LPG. Staff members are instructed in the proper use and handling of these products and are trained in incident management.

Incident Management

- In the event of a minor chemical spill, Site Management has been instructed to implement the actions indicated on the chemical's SDS.
- In the event of a major spill, which is considered highly unlikely given the proposed storage methods and the low volumes of chemicals to be stored on-site, Site Management has been instructed to follow this procedure:
 - Contact the EPA and/or other appropriate regulatory authorities immediate and advised of the nature of the chemical spill or incident, and adhere strictly to any instructions issued by the authority.
 - Where possible, contain the spilled material using vermiculite or similar absorbing material, and/or recover into suitable containers.
 - Any contaminated soil and/or absorption material is to be collected, managed and disposal of as advised by the regulatory authority.
 - Clean soil is to be brought in once all contaminated material has been removed.

Surface Water Management

An engineered surface water management system has been implemented to provide long-term structural controls and management measures to mitigate the impact of surface water runoff throughout the life of the operation. This system includes clean water diversion contours and an on-site management system to deal with shed wash down water and rainfall runoff from within the PPU sites.

2.4 Inventory of Pollutants

Table 2 provides a summary of the potential pollutants (hazardous materials) stored and/or used onsite at the Development. The location of these pollutants is shown on **Figure 3**.

Table 2 Potential Pollutants at the Development

Product Name	Storage Location(s)	Maximum Quantity	SDS Available
Agriquat	Pump Shed – 50 L Chemical Storage Shed – 100 L	Total – 150 L	Y
Polyphen	Pump Shed – 85 L Chemical Storage Shed – 25 L	Total – 110 L	Y
Ditrac	Pump Shed	16 kg	Y
Glister	Pump Shed	20 L	Y
Chlorine	Pump Shed	800 L	Y
Petrol	1 x 2,000 L tank	1,200 L	Y
Diesel	2 x 2,000 L	Total –4,000 L	Y
LPG	6 x 7,500 L	Total – 45,000 L	Y
Poultry Litter*	N/A (removed from the site)	N/A	N/A

* The product does not pose a health threat to the surrounding community.

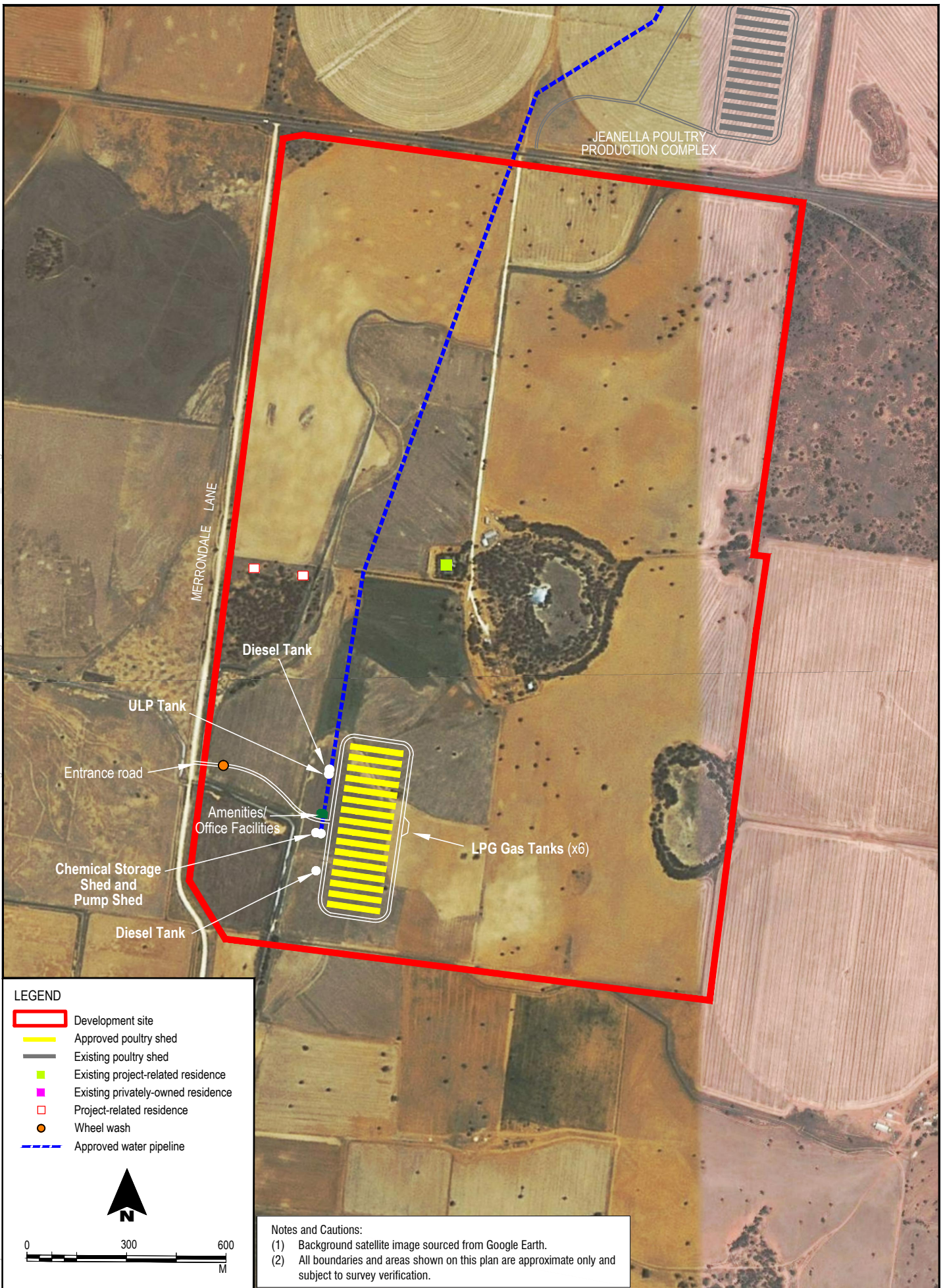
2.5 Safety Equipment

Table 3 lists the safety equipment kept onsite at the Development.

Table 3 Inventory of Safety Equipment

Product Name	Location(s)	Calibration/Maintenance Requirement
Fire extinguishers	Poultry sheds	Checked every 6 months
SDSs	Chemical stores	When a new chemical is brought on site or the SDS is update/revised
First AID Kits	Office/staffroom	As required
Personal Protective Equipment (PPE)	Workshop/office/staffroom	As required and needed

Figure 4 illustrates the location of fire safety and first aid equipment stored across the site.



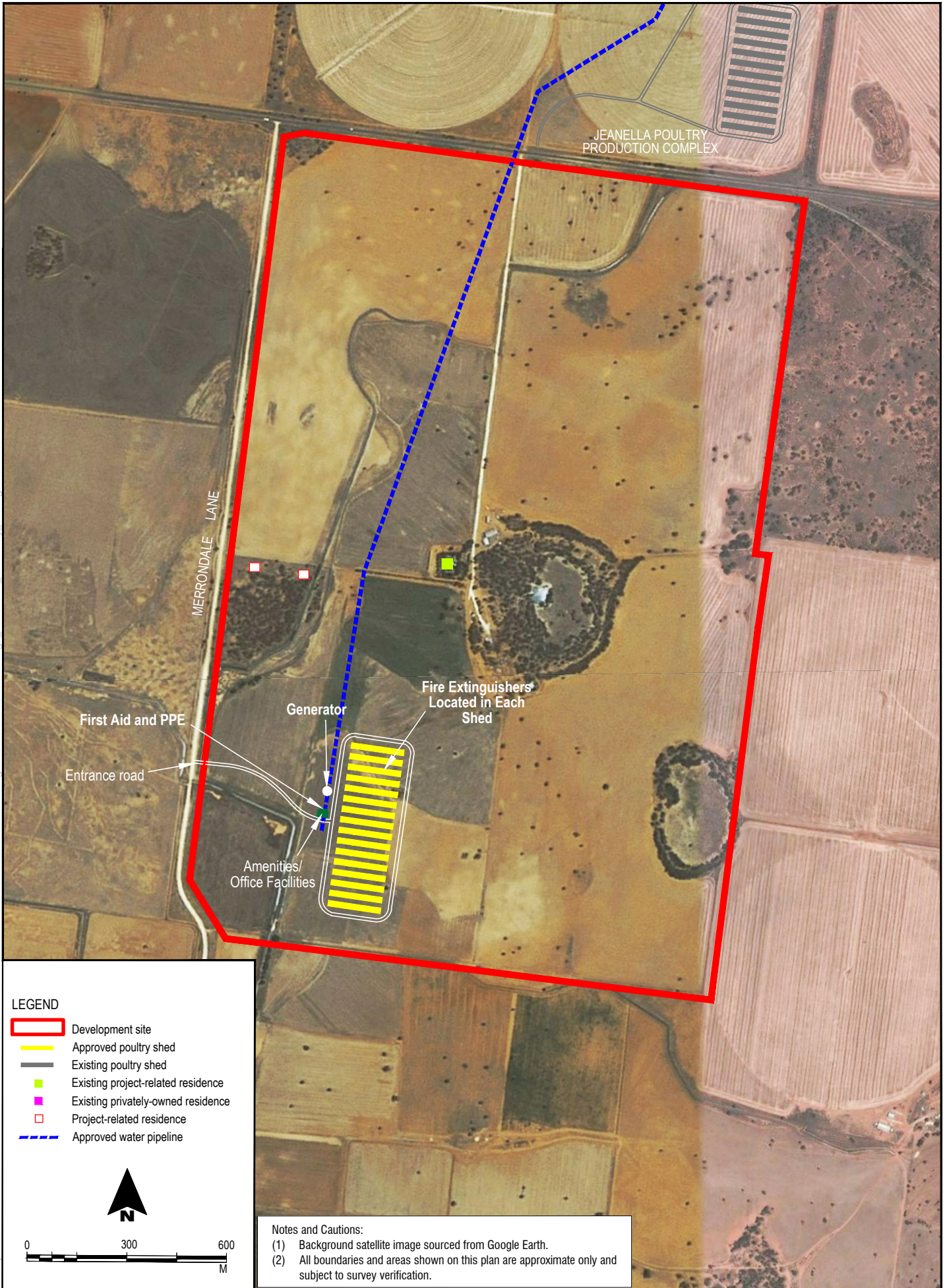
LEGEND

- Development site
- Approved poultry shed
- Existing poultry shed
- Existing project-related residence
- Existing privately-owned residence
- Project-related residence
- Wheel wash
- Approved water pipeline



Notes and Cautions:
 (1) Background satellite image sourced from Google Earth.
 (2) All boundaries and areas shown on this plan are approximate only and subject to survey verification.

To be printed A4



To be printed A4

3 Management and Responsibilities

3.1 Contact Details

The management and implementation of this PIRMP is to be undertaken by the key individuals listed in **Table 4**. These individuals are responsible for activating the PIRMP, managing the response to the incident and are authorised to notify relevant authorities.

Table 4 Primary Contacts for the Development

Key Contact	Contact Details	Position
		Jeanella South Farm Manager
		ProTen National Operations Manager
		ProTen Griffith Regional Manager

Whilst personal contact details are listed in the controlled version of the PIRMP maintained onsite, they do not appear in the public document under provision of the *Privacy and Personal Information Protection Act 1998*.

3.2 Relevant Regulatory Authorities

Table 5 lists the contact details for the regulatory authorities that should be notified in the event of a pollution incident at the Development.

Table 5 Relevant Regulatory Authorities Contact Details

Appropriate Regulatory Authority	Key Contact	Contact Details
Environment Protection Authority	Environmental Line	Ph: 131 555 <i>This will result in the incident being recorded and the appropriate person being contacted.</i>
	Griffith Regional Office	Ph: 02 6969 0700
NSW Health	Central Office	Ph: 1800 020 103
SafeWork NSW	Incident Notification Hotline (Response Management Team)	Ph: 131 050 <i>Select Option 3 to report a 'Serious Incident or Fatality' - this will result in the incident being recorded and the appropriate person being contacted.</i>
Local Authority (Council)	Carrathool Shire Council – Planning and Environment Department	Ph: 02 6965 1900 <i>After office hours, emergency calls are diverted to Council's after-hours service (on the same phone number).</i>
Emergency Services (Fire and Rescue NSW, NSW Ambulance and NSW Police)		Emergency - Ph: 000 Fire & Rescue - Ph: 1300 729 579

3.3 Communication with Neighbours and the Local Community

The location of the Development is outlined in **Section 2.1** and shown on **Figure 1**. As advised, the nearest residential dwelling is over 2 kilometres from the nearest poultry sheds. Goolgowi township, located approximately 6.5 kilometres to the north-east of the Development, is identified as the closest populated area.

In the event of a pollution incident, ProTen has established the following processes for contacting the local community:

- When an incident occurs, Site Management will immediately contact the five regulatory authorities listed in **Table 5**.
- Site Management will consult with these regulatory authorities to determine if the community is to be notified of the pollution incident. Site Management will discuss the most appropriate communication strategy with the regulatory authorities (for example, media release, local radio, direct contact with those potentially impacted).
- When determining the appropriate response and notification process for a particular pollution incident, all aspects of the pollution event will be taken into consideration (for example, type and extent of pollution). Notification strategies may include door knocking, letter drop, phone calls, SMS or email (where contact details are available), notifications on the ProTen website and/or other forms of social and mass media as appropriate to the circumstances.

A list of community contact details is available on-site should notification be required.

3.4 Minimising Harm to Persons on the Premises

All staff and contractors are inducted and trained prior to completing any work on site. The induction covers procedures for minimising the chance of a pollution incident occurring, notification processes, managing a pollution incident and actions following a pollution incident. Records of staff training are kept onsite.

Minimising the impact to persons at the Development during a pollution incident must be the highest priority. In the event that a pollution incident requires the evacuation of the site, actions will be completed in accordance with the Site Evacuation Procedure. In the event of an evacuation:

- The notification system will be sounded;
- The Warden is to contact emergency services if required;
- The Warden (or other staff member nominated by the Warden in his/her absence) is the only person to coordinate with the emergency services;
- Employees are to promptly stop work and move to the nearest emergency assembly area and remain there until instructed to leave;
- The Warden (or other staff member nominated by the Warden in his/her absence) is to perform a role call;
- Once the Warden gives the all clear employees are able to return to work; and
- ProTen's National Operations Manager is to be notified as soon as possible following an actual emergency event.

All staff are informed of the location of Emergency Assembly Areas through site inductions, signage and on-going training. As part of the preparation of the PIRMP, the key aspects of the PIRMP will be provided to staff and contractors. The PIRMP will be tested every twelve months as detailed in **Section 5.2**.

3.5 Legal Duty to Notify

All employees, contractors and sub-contractors at the Development are responsible for alerting Site Management to hazards and potential hazards that may result in an environmental incident, regardless of the nature or scale.

Notification responsibilities are detailed in section 148 of the POEO Act, and these can be categorised broadly as:

- **The duty of an employee or any person undertaking an activity:**

Any person engaged as an employee or undertaking an activity must, immediately after becoming aware of any potential incident, notify their relevant manager of the incident and all relevant information about it. This is to be undertaken as per **Section 3**; and

- **The duty of the employer or occupier of a premises to notify:**

An employer or occupier of the premises on which the incident occurs, who is notified (or otherwise becomes aware of) a potential pollution incident, must undertake notification to the appropriate regulatory authorities of any “material harm incidents”, as defined in **Section 1.3**, including relevant information. Notification shall be undertaken by Site Management as per **Section 3**.

4 Incident Management

4.1 Immediate Notification of a Pollution Incident

Holders of an EPL are required to report pollution incidents *“immediately”* (section 148 POEO Act). This means that licensees need to report pollution incidents without delay.

Licensees must notify all of the relevant authorities (contact details can be found in **Table 5**), which, for the Development, are identified as:

- EPA;
- NSW Health;
- SafeWork NSW;
- Carrathool Shire Council; and
- Fire and Rescue NSW.

4.2 Actions During a Pollution Incident

ProTen aims to effectively respond to any environmental incident and promptly prevent or reduce any adverse environmental impact. Site Management is responsible for coordinating the PIRMP procedure in the event of an environmental incident and ensuring that staff members working in critical areas are trained appropriately. All staff are instructed to notify Staff Management of any environmental incident and take immediate action (where it is safe to do so) to prevent, contain and/or minimise the environmental impact of the incident.

Upon becoming aware of an environmental incident, Site Management is required to follow these steps:

(1) Preventative Action

Where possible and safe to do so, immediate action should be taken to prevent, stop, contain and/or minimise the environmental impact of the incident. The situation should be visually assessed and emergency response undertaken if required.

In the event that a pollution incident requires the evacuation of the site, actions will be completed in accordance with the Site Evacuation Procedure. All staff are informed on the location of Emergency Assembly Areas through site inductions, signage and on-going training.

(2) Assistance

Where assistance is required in handling the situation, ProTen’s National Operations Manager should be contacted (**Table 4**).

Where the incident is reported via a regulatory authority the National Operations Manager must be notified immediately (even if outside of normal business hours).

The person reporting the pollution incident should provide the following key details:

- Location of the pollution incident/emergency;
- Nature of the pollution incident/emergency;
- Their name and contact details; and

- Details of any assistance required.

If adequate resources are not available and the incident threatens public health, property or the environment, Fire and Rescue NSW should be contacted on 000 for emergency assistance and/or the EPA can be contacted on 131 555 (Environment Line). If Fire and Rescue NSW is called, they may notify the EPA if they consider the environment or public health to be threatened. Notification by Fire and Rescue NSW does not negate the notification requirements outlined below.

(3) Notify

Under the provisions of the POEO Act, there is a duty to notify any incident that has caused or threatens to cause material harm to the environment and all relevant information about the incident. The specific duties to notify are outlined in **Sections 3.5 and 4.1**. The relevant authorities required to be immediately notified are listed in **Table 5**.

In the event of a serious incident or emergency, it is more than likely that the Fire and Rescue NSW and/or the EPA will take control and manage the required investigation and remedial activities. Any instructions issued must be strictly adhered to.

(4) Investigate

Undertake immediate investigative work to determine the cause of the incident.

(5) Remedial Action

Undertake appropriate remedial action to address the cause of the incident and mitigate any further environmental impact. In some instances, outside resources such as specialist contractors/consultants may be required.

It is imperative that an honest assessment of the situation is carried out and documented in order to minimise the potential for similar events in the future. On this basis, every environmental incident is to be recorded on ProTen's standard *Environmental Incident Report Form* contained within **Appendix B**. A copy of the completed form should be maintained for at least four years.

Additional controls for managing chemical spills include:

- Advise relevant regulatory authorities if spill is considered to be significant or threatening material harm, and adhere to any instructions issued by them;
- Recover material into other containers if feasible;
- Where possible, contain spillage onto vermiculite or similar absorbing materials such as those produced by various chemical companies;
- Remove contaminated soil and or/absorption material to an approved disposal site as advised by the EPA or Council;
- Replace with clean soil or material once it has been established that all contamination has been removed; and
- For minor spills the actions indicated in the SDSs relating to spills or leaks should be followed.

4.3 Actions Following a Pollution Incident

In the event of a pollution incident, there will be a detailed incident investigation completed will be completed by a ProTen employee and a report will be sent to Site Management and relevant regulatory authorities. As with all complaints, if ProTen was notified of the pollution incident by a member of the public, the complaint will then be logged as per the Environmental Complaint Record Form. All complaints records will be kept on site in a legible format for a minimum of four years.

Depending on the nature and/or extent of the pollution incident, ProTen will consult with the relevant authorities when determining whether the community will be notified of the pollution incident. If the community is to be notified, and as outlined in **Section 3.3**, ProTen will decide the most appropriate consultation and/or notification strategy with the relevant authorities.

Within a month following a pollution incident, the PIRMP will be reviewed and tested. ProTen will continue to liaise with the relevant authorities to reduce the likelihood of the pollution incident re-occurring.

All staff and contractors will receive the necessary refresher training, and the key outcomes of the incident investigation will be reported to staff and contractors.

5 Training, Testing and Communication

5.1 Staff Training

The requirements of the PIRMP are outlined in the site induction of all new employees and contractors. A Toolbox Talk outlining the key components on the PIRMP will be presented to all staff and contractors at the Development following implementation in December 2015. The objective of this training is to ensure all staff and contractors are aware of the key steps required to respond to and manage a pollution incident. Following a pollution incident, refresher training will be delivered to staff and contractors.

5.2 Testing of the PIRMP

The PIRMP will be tested every 12 months (in September each year) as per the requirement of the POEO(G) Regulation. The testing of the PIRMP is to be carried out in such a manner as to ensure that the information included in the PIRMP is accurate and up to date, and that the PIRMP is capable of being implemented in a workable and effective manner.

The Jeanella South Farm PIRMP was last tested in September 2018. Testing involves all staff reviewing a factsheet containing an overview of the PIRMP and reporting requirements relating to pollution incidents, followed by all staff completing a two-page quiz on various scenarios which might require reporting under the PIRMP and testing on other PIRMP requirements. A sign-off sheet will be completed by all staff members after completing the quiz and signed off by the Farm Manager.

The PIRMP must also be tested within one month of any pollution incident occurring in the course of an activity to which a licence relates. This is to assess, in the light of that incident, whether the information included in the PIRMP is accurate and up to date, and the PIRMP is still capable of being implemented in a workable and effective manner.

Since being implemented in December 2015, the PIRMP has not been activated and there have been no pollution incidents at the Development.

6 References

Environment Protection Authority (2012) *Guideline for the Preparation of Pollution Incident Response Management*

APPENDIX A

Risk Assessment

APPENDIX A: PROTEN JEANELLA SOUTH COMPLEX POLLUTION RISK ASSESSMENT

							Version:- B Date:- May 2015			
Risk Category	Risk Ref. Number	Potential Hazard / Risk (Impact)	Relevance to Project	Inherent			Existing Controls / Management Response	Pollution Response Measures		
				C	L	Rating				
Spill	1	Spill of hazardous material causing impact to human health or environment	Operation of Jeanella South requires only limited chemical input, however the primary areas of chemical use are cleaning/sanitisation and pest/vermin control.	3	C	3C	13 (S)	Limited chemicals stored on site. Chemical storage area container. Contracted company for chemical delivery and pickup services. SDSs available for chemicals stored and used onsite. Relevant staff are instructed on proper use and handling of chemicals and spill/incident management procedures. Training and awareness.	1. Visually assess the situation, consult SDS for the chemical and activate PIRMP and/or emergency evacuation procedure if required. 2. Contact the Relevant Authorities in accordance with the PIRMP and take direction as required. 3. Seek immediate assistance from specialist environmental consultants.	
	2	Spill of fuel causing impact to the environment	Fuel is stored onsite however is located in bunded areas to contain potential spills	5	C	5C	22 (L)	Fuel tanks in bunded areas with overflow containers. SDS available for fuel and diesel. Training and awareness.	4. Complete incident investigation and send report to Relevant Authorities	
Surface Water	3	Contamination of surface water by chemicals causing impact to human health.	Operation of Jeanella South requires limited chemical input. All dirty water is collected in two detention basins onsite.	4	D	4D	21 (L)	Limited chemicals stored on site. Runoff from sheds and during shed cleaning is collected in the two detention basins onsite. Relevant staff are instructed on proper use and handling of chemicals. Training and awareness.	1. Visually assess the situation, consult SDS for the chemical and undertake emergency response if required 2. Contact the Relevant Authorities in accordance with the PIRMP and take direction as required. 3. Seek immediate assistance from specialist environmental consultants.	
	4	Contamination of surface water causing impact to the environment.	Operation of Jeanella South requires limited chemical input, however there is a risk that a pollution incident caused by excessive poultry litter or cleaning chemicals could potentially occur.	5	D	5D	24 (L)	Maximise dry-cleaning practices in sheds when removing poultry litter. Erosion and sediment control measures in place. Clean water diversion contour banks. Fuels stored in bunded areas with overflow containers in place	4. Complete incident investigation and send report to Relevant Authorities	
Air Quality	5	Smoke (due to onsite fire) causing impact to human health.	A fire could occur onsite and smoke could affect human health due to smoke inhalation.	4	D	4D	21 (L)	Emergency response/evacuation procedures. Fire/Smoke detection systems in buildings and sheds. Fire extinguishing equipment located in all sheds and other locations around the site.	1. Visually assess the situation, undertake emergency response/evacuation procedures if required. 3. Contact and take direction from Relevant Authorities. 4. Complete incident investigation and send report to relevant authorities.	
	6	Dust emissions from unsealed surfaces from site causing impact to human health.	Dust could affect human health due to dust inhalation at the site. Site access roads are unsealed surfaces that could cause dust in dry conditions. Excessive dust could impact the surrounding environment.	4	D	4D	21 (L)	Site landscaping is maintained. Maintenance of internal gravel roads. Single entry access to the PPU. Site speed limits.	1. Visually assess the situation, undertake emergency response if required. 2. Stop/Shut down all dust producing activities. 3. Contact the Relevant Authorities and take direction as required. 4. Complete incident investigation and send report to relevant authorities.	
	7	Odour emissions from site causing impact to human health/comfort	Due to the nature of operations, odour emissions and offensive odour are an issue, however, the definition of odour as a pollution incident is dependent on a number of complaints received rather than a single odour emission/incident. A collection of samples is required as part of an odour impact assessment and odour modelling subject to verified offensive odour incidents.	4	C	4C	18 (M)	Landscape Management Plan Mass Bird Disposal Plan. Site inspection and maintenance program. Meteorological monitoring Daily inspections and removal of dead birds to onsite chillers Daily maintenance and removal of soiled bedding material. Reduced shed ventilation rates Complaints Procedure No long-term stockpiling or disposal of waste products on-site. A Telephone Complaints Line is available for the public to contact the site to make a complaint during hours of operation.	1. Upon receipt of an odour complaint, handle and manage complaint in accordance with the complaints procedure including recording the complaint on a Complaints form 2. Confirm if Jeanella South is the source of the odour and if so, if the odour can be reduced.	
	8	Gas emissions causing impact to human health	Leak from an onsite fuel or gas tank could cause impact to human health by inhalation	3	D	3D	17 (M)	SDSs for fuels and chemicals stored and used onsite. Site inspection and maintenance program. Emergency evacuation/response procedures. Training and awareness. Fuel stored in a bunded area.	1. Assess the situation for the type and extent of the incident. 2. Apply appropriate safety precautions, consult SDS for the chemical and activate emergency evacuation procedure if required 3. Notify the Relevant Authorities in accordance with the PIRMP and take direction as required. 4. Seek immediate assistance from specialist environmental consultant/contractor. 5. Complete incident investigation and send report to Relevant Authorities	
Fire	9	Gas Emissions or fuel causing fire or explosion	Leak from one of the onsite fuel or gas tanks could result in fire or explosion	4	C	4C	18 (M)	Emergency response/evacuation procedures. Fire/Smoke detection systems in buildings and sheds. Fire extinguishing equipment located in all sheds and other locations around the site.	1. Assess the situation for the type and extent of the incident. 2. Apply appropriate safety precautions, consult SDS for the chemical and activate PIRMP and/or emergency evacuation procedure if required 3. Notify the Relevant Authorities in accordance with the PIRMP and take direction as required. 4. Complete incident investigation and send report to Relevant Authorities.	
	10	Fire in PPU or site premises	Fire on the premises due to weather conditions	4	C	4C	18 (M)	Emergency response/evacuation procedures. Fire/Smoke detection systems in buildings and sheds. Fire extinguishing equipment located in all sheds and other locations around the site. PPU cleared of debris at the end of each production cycle Fuel stored in bunded tanks with overflow containers. Land surrounding the sheds is regularly slashed and well maintained. Gas contained in permanent bulk tanks.	1. Apply appropriate safety precautions, contact emergency services and conduct emergency evacuation procedure if required 2. Utilise fire safety equipment such as extinguishers located in each shed. 3. Notify the Relevant Authorities in accordance with the PIRMP and take direction as required. 4. Complete incident investigation and send report to Relevant Authorities.	
Waste	11	Incorrect handling, use, storage and/or disposal of hazardous/toxic waste causing impact to human health.	Licensed waste contractor to remove waste from site.	4	C	4C	18 (M)	No access of the site to the public. Sign in book at site entry. Contract with licensed waste contractor for transport. Poultry litter removed for offsite rural/agricultural application. Chemical supply company directly services the site dropping of and removing chemicals and containers. Training & awareness. Mass Bird Disposal Strategy. Quarantine Management Plan. Wheelspray facility.	1. Visually assess the situation 2. Apply appropriate safety precautions, consult SDS for the chemical if appropriate, and undertake emergency response if required. 3. Activate PIRMP and/or emergency evacuation procedure. 4. Notify Relevant Authorities	
	12	Incorrect handling, use, storage and/or disposal of hazardous/toxic waste causing impact to the environment.	Licensed waste contractor to remove waste from site.	5	C	5C	22 (L)		5. Undertake inspection to ensure that any waste has not leaked or split. 6. Take direction from specialist authorities. 7. Engage specialist waste handling consultants.	
Noise	13	Noise emissions from site causing impact to human health.	Operation of the site may cause disruption to surrounding receptors if noise limits are exceed (NB - Noise is not defined as a pollution incident by the EPA for the PIRMP).	5	D	5D	24 (L)	Operating hours as approved by consent conditions. Complaints handling procedure. Complaints Reporting Hotline available during hours of operation. Plant and Equipment regularly inspected and maintained to ensure optimal operating condition. Plant and equipment operators instructed how to minimise noise generation.	1. Upon receipt of noise complaint, handle and manage complaint in accordance with the complaints procedure. 2. Review operation activities to determine if noise can be reduced. 3. Ensure all operation activities are only undertaken during approved operating hours. 4. Record complaint on Complaints form and keep on file.	

APPENDIX B

Environmental Incident Report Form

PROTEN HOLDINGS

Jeanella South Poultry Broiler Production Complex

ENVIRONMENTAL INCIDENT REPORT FORM

INCIDENT DETAILS

Date of Incident:- Time of Incident:-am/pm

Location:-

Description:-
.....
.....
.....

NOTIFICATION TO REGULATORY AUTHORITY

Has the incident caused or does it threaten to cause material harm to the environment:- Yes / No
If yes, the relevant authorities (as listed in the PIRMP) must be notified immediately.

Relevant Authorities Notified:- Yes / No

Who:-

Date:- Time:am/pm

Instructions:-
.....
.....
.....

REMEDIAL ACTION

Remedial Action Undertaken:- Yes / No (if no, give reason)

Description:-
.....
.....

Any Further Corrective Action Required:- Yes / No

If Yes, Describe:-
.....
.....

SIGN OFF

Name:- Title:-

Signature:- Date:-

ASIA PACIFIC OFFICES

BRISBANE

Level 2, 15 Astor Terrace
Spring Hill QLD 4000
Australia
T: +61 7 3858 4800
F: +61 7 3858 4801

MACKAY

21 River Street
Mackay QLD 4740
Australia
T: +61 7 3181 3300

ROCKHAMPTON

rockhampton@slrconsulting.com
M: +61 407 810 417

AUCKLAND

68 Beach Road
Auckland 1010
New Zealand
T: +64 27 441 7849

CANBERRA

GPO 410
Canberra ACT 2600
Australia
T: +61 2 6287 0800
F: +61 2 9427 8200

MELBOURNE

Suite 2, 2 Domville Avenue
Hawthorn VIC 3122
Australia
T: +61 3 9249 9400
F: +61 3 9249 9499

SYDNEY

2 Lincoln Street
Lane Cove NSW 2066
Australia
T: +61 2 9427 8100
F: +61 2 9427 8200

NELSON

5 Duncan Street
Port Nelson 7010
New Zealand
T: +64 274 898 628

DARWIN

5 Foelsche Street
Darwin NT 0800
Australia
T: +61 8 8998 0100
F: +61 2 9427 8200

NEWCASTLE

10 Kings Road
New Lambton NSW 2305
Australia
T: +61 2 4037 3200
F: +61 2 4037 3201

TAMWORTH

PO Box 11034
Tamworth NSW 2340
Australia
M: +61 408 474 248
F: +61 2 9427 8200

NEW PLYMOUTH

Level 2, 10 Devon Street East
New Plymouth 4310
New Zealand
T: +64 0800 757 695

GOLD COAST

Ground Floor, 194 Varsity Parade
Varsity Lakes QLD 4227
Australia
M: +61 438 763 516

PERTH

Ground Floor, 503 Murray Street
Perth WA 6000
Australia
T: +61 8 9422 5900
F: +61 8 9422 5901

TOWNSVILLE

Level 1, 514 Sturt Street
Townsville QLD 4810
Australia
T: +61 7 4722 8000
F: +61 7 4722 8001